

Only park the unit on firm, level ground, DO NOT use on slopes, soft ground or where there is a risk of one or more leg subsiding.

The unit is controlled by the handset, to raise the load press the left-hand button and to lower, press the right-hand button.

When lowering the unit with a load, only use the right-hand button.

If lowering the unit unloaded, you can use the 'dump' valve on the top of the handset. Simply raise to lock open and release pressure, lower to lock closed.

Take great care when raising or lowering, practice without a load until you are familiar with its operation.

Because the unit is operated by compressed gas, there is a degree of 'elasticity' in the system. That is to say that when an elevated load is removed and therefore the pressure on the unit is reduced, the platform will spring up. Take great care when removing an elevated load.

The load MUST be secured to the platform, DO NOT presume that the load will 'keep itself in place'. Use ratchet strapping, DO NOT use ropes or elastic 'bungie' straps.

The load should be evenly distributed over the platform area and must not exceed the unit's safe working load (see SWL load table)

Always position yourself so you can control the Lift while staying clear of the elevated load.

Take your time and don't overdo it. You are more likely to have an accident if you are tired or rushing.

EQUIPMENT CARE

Never push the equipment beyond its design limits. If it will not do what you want with reasonable ease and speed, assume you have the wrong tool for the job. Contact your local HSS Hire for advice.

Keep the equipment clean, you will find this less of a chore if you clean it regularly, rather than wait until the end of the hire period.

When not in use, store the equipment somewhere clean, dry and safe from thieves and unauthorised users.

FINISHING OFF

Gently lower any elevated load and remove it from the platform.

Close the cylinder valve and open the 'dump' valve to release any stored pressure.

Detach the platform then disconnect the gas hose at both the cylinder and the unit (see GETTING STARTED). Coil the hoses onto the holder on the base of the platform.

Fold and lock the legs by reversing the instruction in GETTING STARTED. Give the Lift a final clean up ready for return, to your local HSS Hire.

GENIE SWL		
Comm Code	70132	70133
Height	3.7m	5.5m
SWL	136 KG	113 KG



... have you been trained

The law requires that personnel using work equipment have received adequate training and must be competent when using the equipment within the workplace. Training is available at HSS Training Solutions 0845 766 7799

...any comments?

If you have any suggestions to enable us to improve the information within this guide please e-mail your comments or write to the Safety Guide Manager at the address below e-mail: safety@hss.com

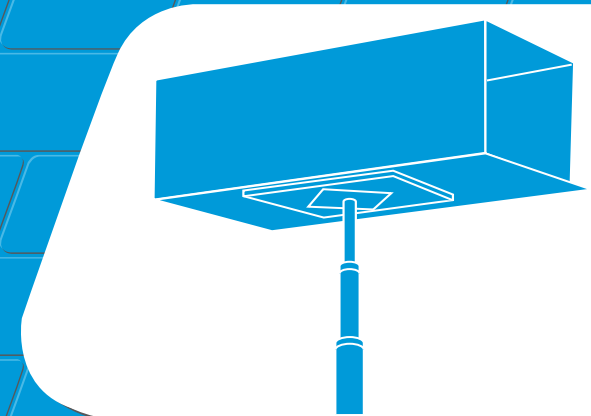
©HSS Hire Service Group Ltd 2020 No. LS018/03
76 Talbot Road, Old Trafford, Manchester, M16 0PQ

www.hss.com

LS018/02

Operating & Safety Guide LS018

HSS Hire



Gas Operated Lifts

A versatile gas operated lift, powered by vapourised CO², ideal where no power supply is available and fuel engine lifts cannot be used.



Code 70132/3



GENERAL SAFETY

For advice on the safety and suitability of this equipment contact your local HSS Hire.


There is a serious risk of personal injury if you do not follow all instructions laid down in this guide.

This equipment is designed to be used by an able bodied, competent adult who has read and understood these instructions. Anyone with either a temporary or permanent disability should seek expert advice before using it.

Keep children, animals and bystanders away from the work area. Cordon off a NO GO area using cones and either barriers or tape.

  Never use this equipment if you are ill, feeling tired, or under the influence of alcohol or drugs.

    Wear practical, protective clothing, gloves, footwear and a protective hard hat. Avoid loose garments and jewellery that could catch in moving parts, tie back long hair.

 Use this equipment for vertical lifts only and use on a level area able to take the combined weight of the load and the equipment.

Make sure you know how to operate this equipment safely and are aware of its limitations before you use it.

It is both the hirer's and the operator's responsibility to perform a risk assessment before using this equipment. You are also responsible for the safety of any person in the work area.

Make sure that anyone in the immediate work area is warned of what you are doing. Never allow anyone under an elevated load or in a position where they are at risk if the load shifts.

Never use the lift near overhead power lines or similar hazards. Never use the lift in windy conditions.

Be aware of the elevated load when close to ceilings or other overhead obstructions.

Warning

Equipment MUST NOT be used to carry or raise personnel.

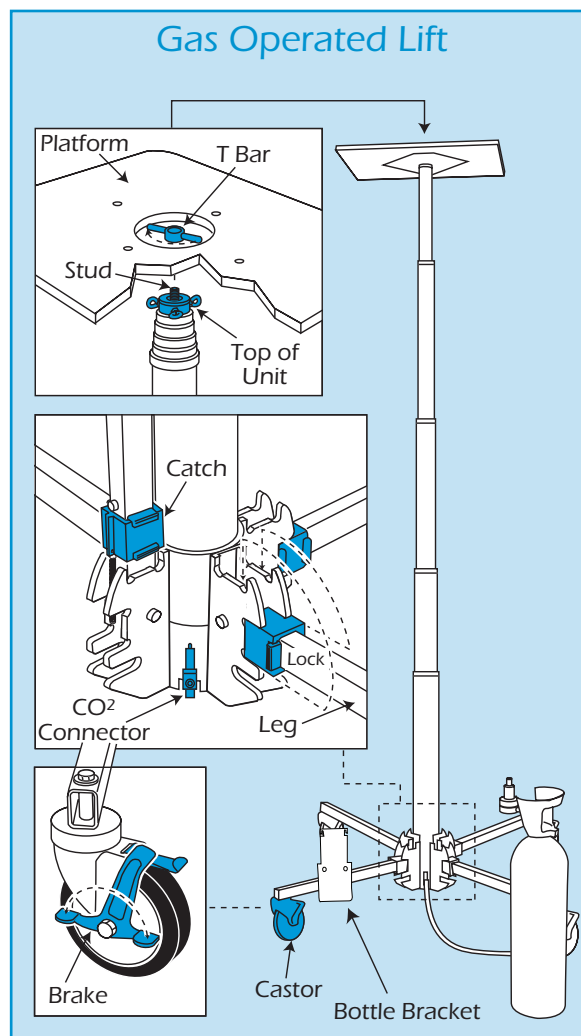
Never exceed the lift's safe working load (see SWL table). Do not use this equipment to raise items, which are longer or wider than the platform. Ensure the load has a flat base or if not, is attached to a suitable pallet. Applying a load on to the platform when it is in the elevated position is not recommended and is deemed as improper use of the machine.

Check the condition of the equipment before use. If it shows signs of damage or excessive wear, return it to your local HSS Hire.

GETTING STARTED

Ensure the floor area is clean, smooth and able to support the lift and the item being elevated.

Set the unit upright on the floor and deploy each leg. Simply raise the catch, lower the leg half way, release the catch and fully lower the leg until the catch engages to lock the leg in position. Check each catch to ensure it is fully engaged.



Next, fit the platform to the top of the unit. Lower the centre of the platform on to the top stud and tighten down by turning the T bar clockwise.

Fit bottle bracket to leg.

Connect the gas supply hose with regulator (Green) to the CO² cylinder (hand tight only).

Connect the hose's remaining end (Red) to the connector at the base of the unit (see illustration). To do this simply move back the outer sleeve on the hose connection and push over the male connector on the base of the unit, until it clicks in position.

Make sure the 'dump' valve is closed (see illustration) then open the cylinder valve (anticlockwise) to prime the system.

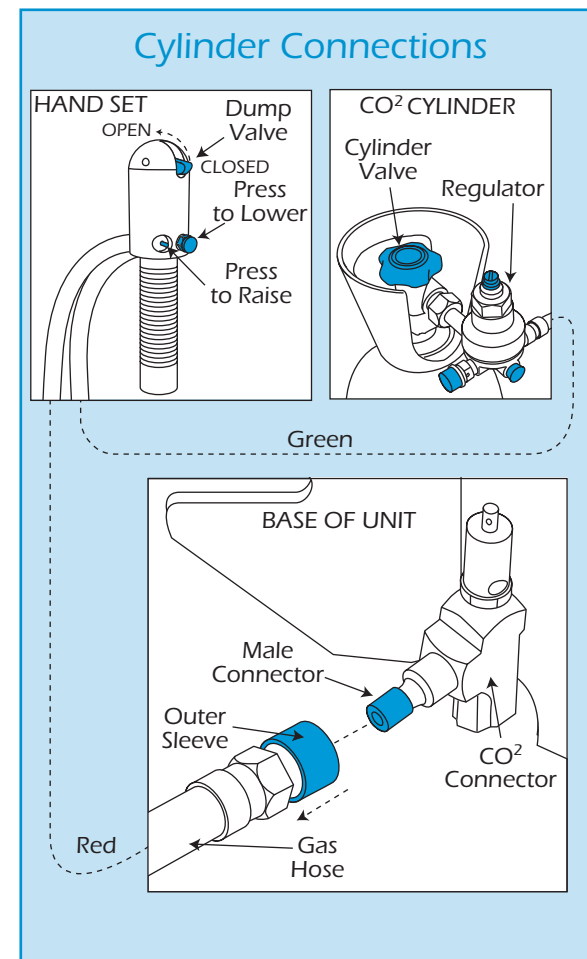
The lift is now ready to use.

BASIC TECHNIQUES

Please note that during use, the regulator and cylinder valve will become extremely cold and may frost over.

Always wear gloves when handling the cylinder valve or regulator.

Wheel the unit to the area where it is required and lock the brake on each castor, make sure they are always used.



Know Your Symbols

HSS have created clear Icons to inform the hirer of their responsibilities towards the safe use of hire equipment.

These are designed to reduce the amount of different safety information labels required for each product for hire.

General use PPE / Warning

Clearly marked minimum PPE will be visible on all equipment,



Correct PPE must be worn



HAV Hand Arm Vibration



Danger Rotating blade



Danger Hot exhaust



Danger Electric shock



Caution Abrasive Wheel



Caution Finger trap

Fuel and Supply Types



Pe
Petrol



Di
Diesel



2t
2 - Stroke Petrol



EI
Electric

Safe Procedures

All hirers must understand and respect the safe procedures of all equipment.

It is the responsibility of the hirer to maintain and return the equipment in a clean condition and good working order.



Ro
Read OPS Guide



Ou
Outdoor Use only



HI
Heavy Lifting



Cd
Check Oil daily



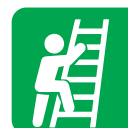
Cf
Check Fuel daily



Cw
Check Water daily



Bc
Battery Care



Sh
Safe Height Working



Swl
Refer to Data Plate



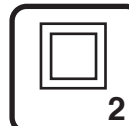
V
Check Power Voltage Data Plate

Electrical Safety

Safe wiring procedures.



Ea
Must be Earthed Class 1



Doi
Double Insulated Class 2



Enl
Earth Live Neutral Wire Coding

Return Responsibility

Charges apply to equipment returned dirty and damaged.



Cc
Cleaning Charge



Rc
Repair Charge